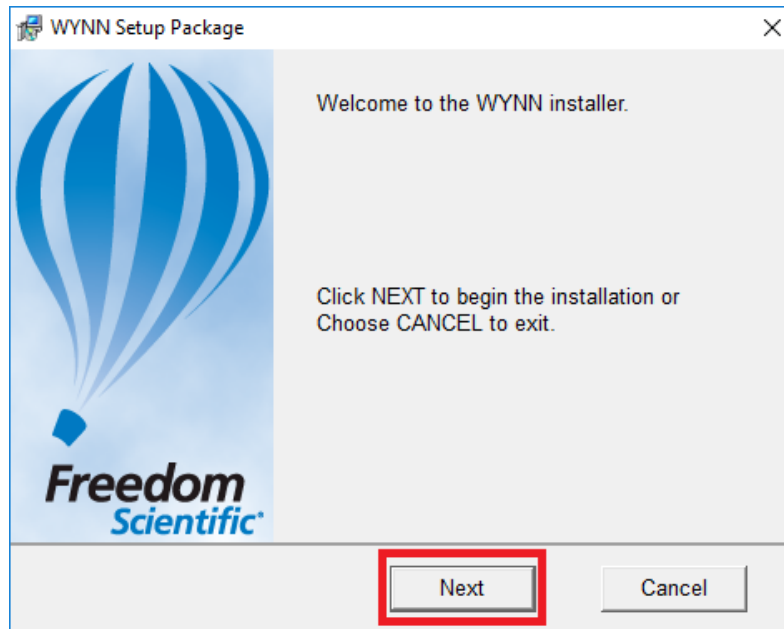


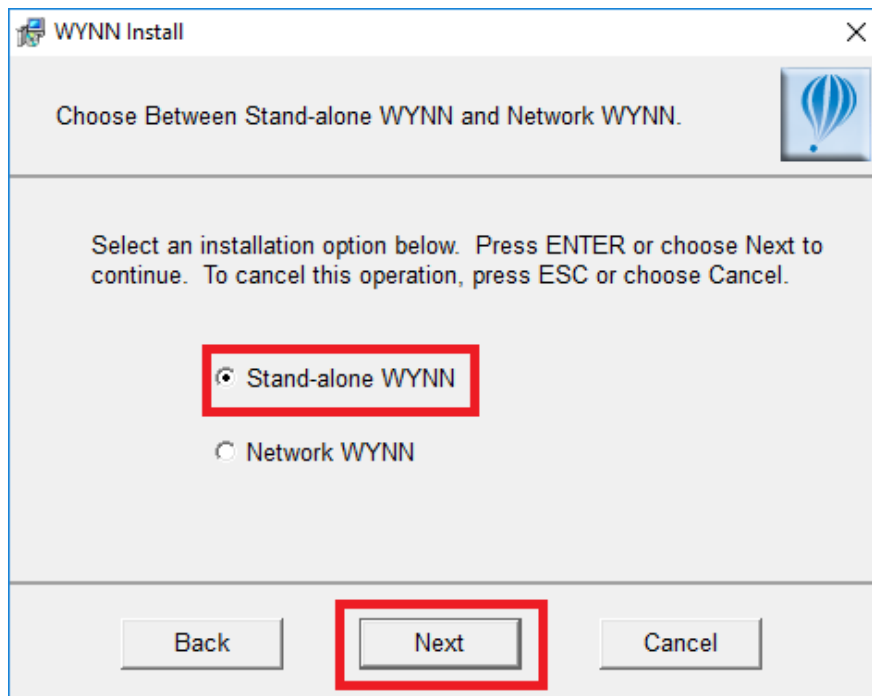
WYNN 7.0 Installation Guide: On Campus Edition

This guide will help teach you how to install and activate WYNN 7.0 for **On Campus** use only. This version works with Windows 10 and below. Currently, WYNN can only be installed by the file provided by CATS.

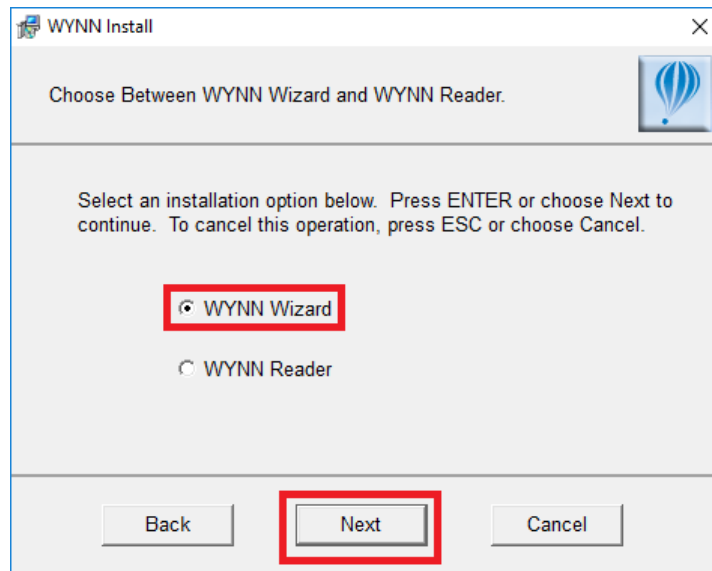
1. Click Next to begin the install.



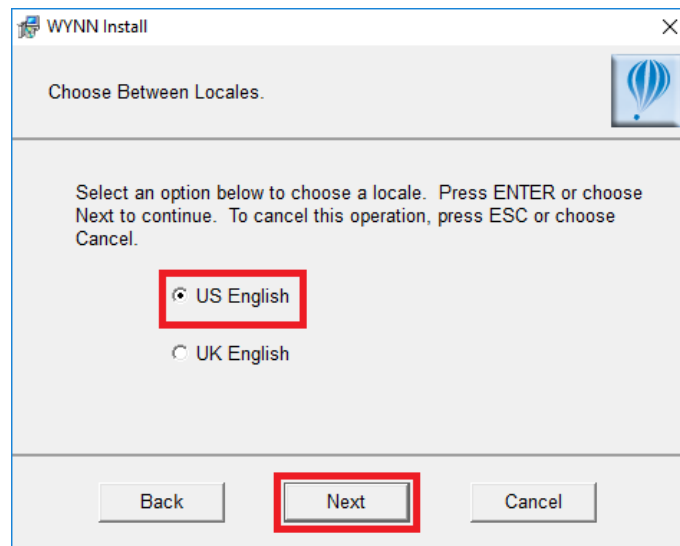
2. Select "Stand-alone WYNN" then click "Next".



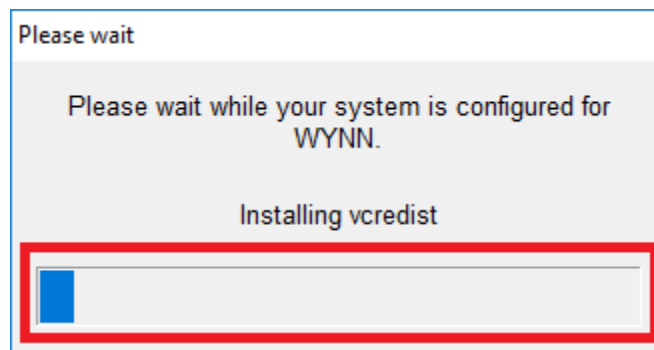
3. Select "WYNN Wizard" then click "Next".



4. Select "US English" for language then click "Next".



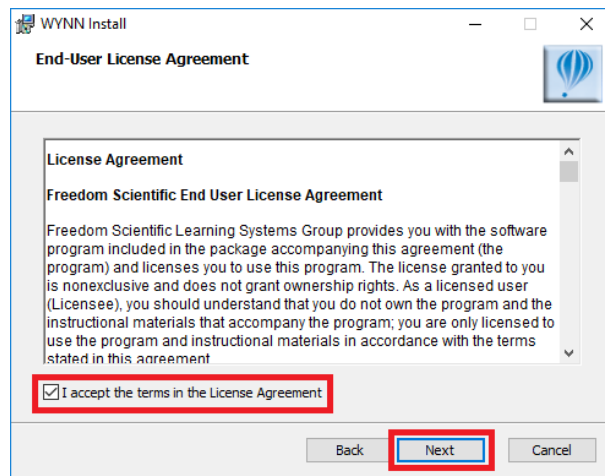
5. Process bar will show.



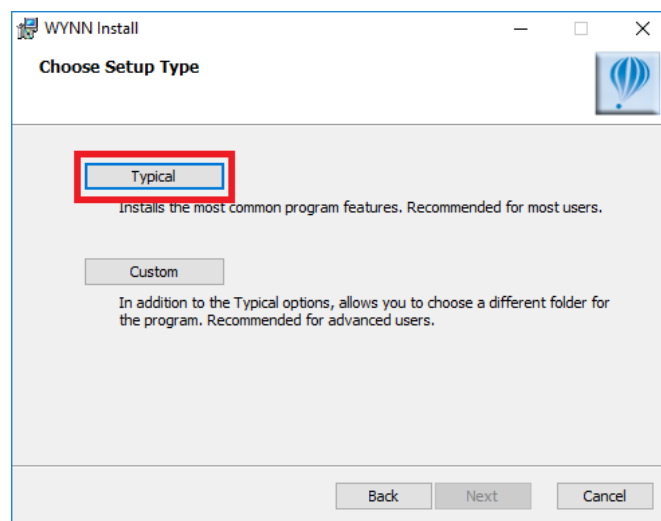
6. Click "Next" to setup final install process.



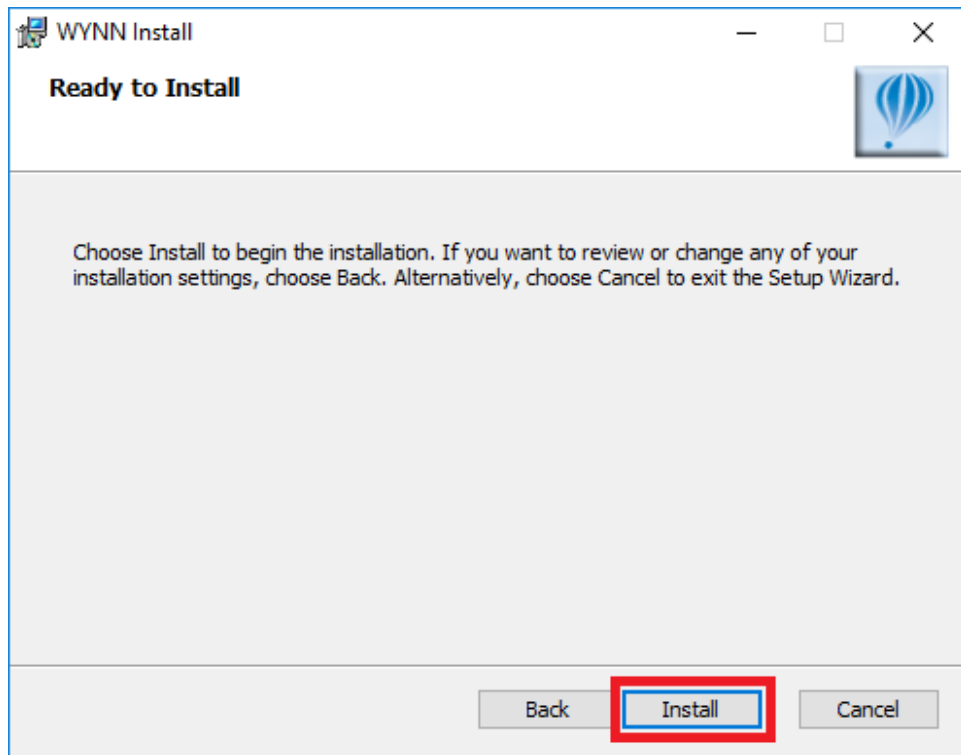
7. Accept License Agreement then click "Next".



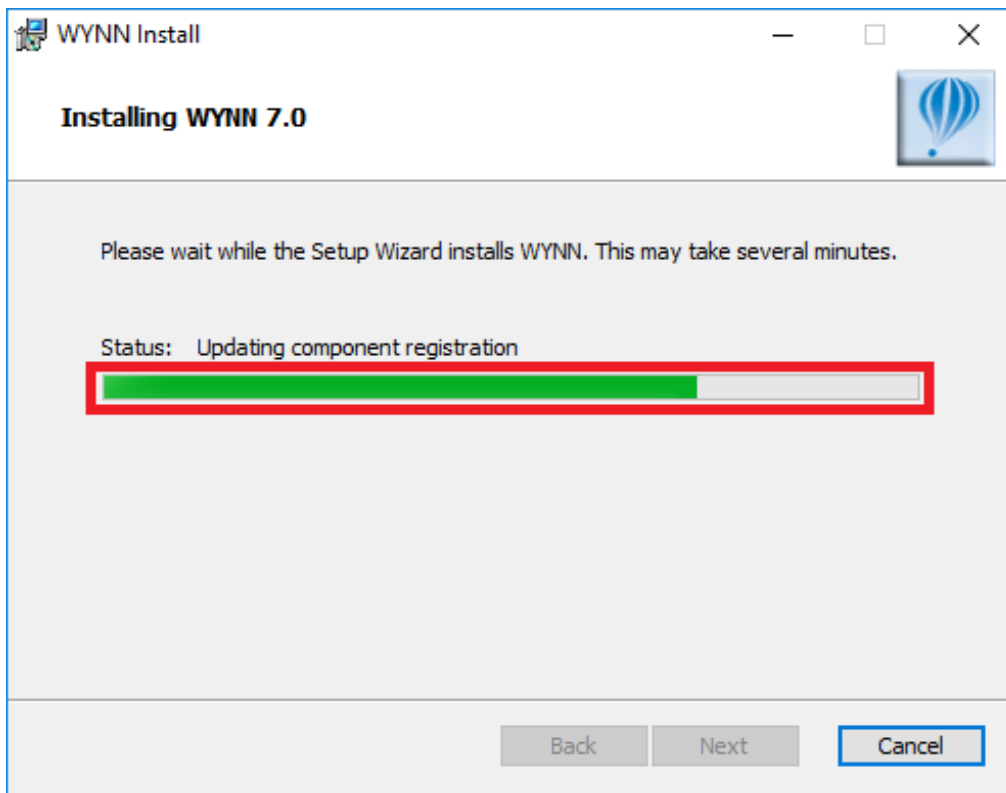
8. Select "Typical" then click "Next".



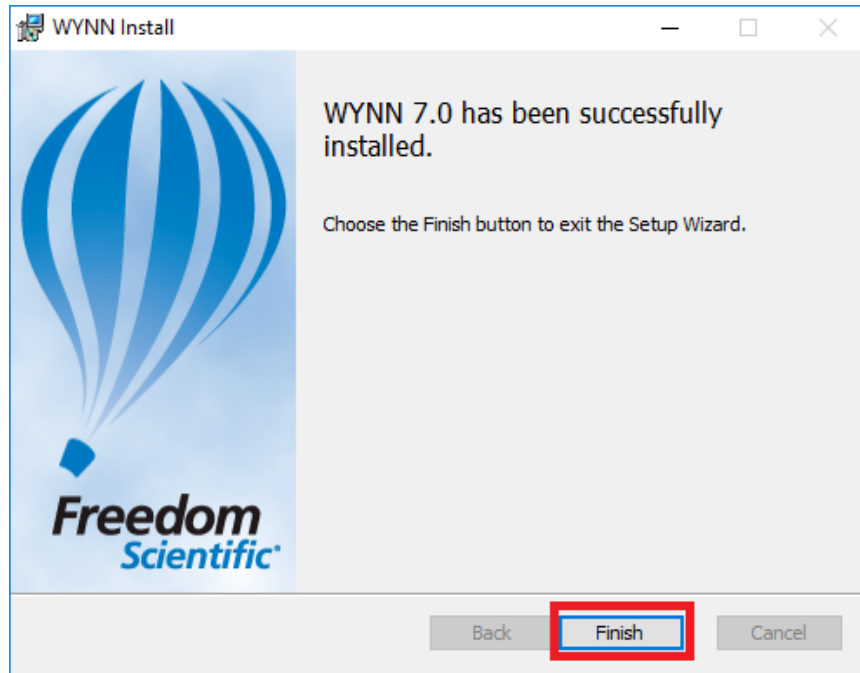
9. Click "Install".



10. A green progress bar will show



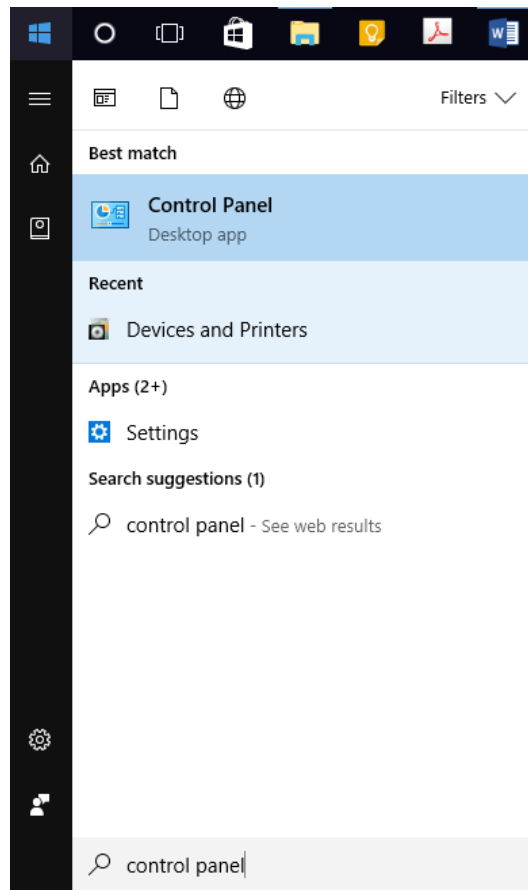
11. Click "Finish" and WYNN will now be installed



Activation

Once you've downloaded the software, you now need to activate the software. If you will not be able to run the software properly until you activate it first. This guide was made on Windows 10 and certain might be placed in different locations for Windows 8 and 7. You must make sure you have Administrator privileges to activate this software.

1. Open the Start Menu and open Control Panel.



2. Select **System and Security**> **System**> **Advanced system settings**.

Adjust your computer's settings

View by: Category ▾

The screenshot shows the Windows Settings application. At the top, there is a header "Adjust your computer's settings" and a "View by: Category" dropdown. Below this, several settings categories are listed in a grid. The "System and Security" category is highlighted with a red box, and a tooltip is visible over it. The "System" category is also highlighted with a red box, and a tooltip is visible over it. Other categories include "User Accounts", "Appearance and Personalization", "Clock, Language, and Region", "Ease of Access", "Security and Maintenance", "Windows Firewall", "Power", and "File History".

System and Security
Review your computer's status
Save backup copies of
Backup and Restore (V
Find and fix problems

System
View amount of RAM and processor speed | Allow remote access | Launch remote assistance |

User Accounts
Change account type

Appearance and Personalization
Change the theme

Clock, Language, and Region
Add a language
Change input methods
Change date, time, or number formats

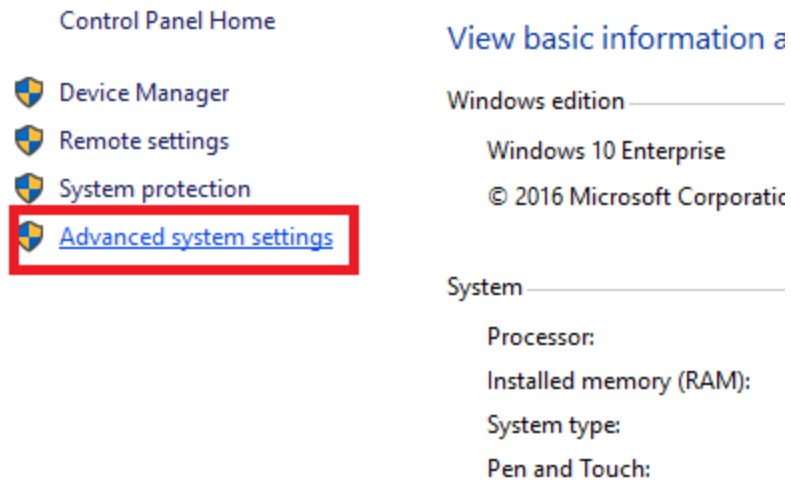
Ease of Access
Let Windows suggest settings
Optimize visual display

Security and Maintenance
Review your computer's status and resolve issues | Change User Account Control settings |
Troubleshoot common computer problems

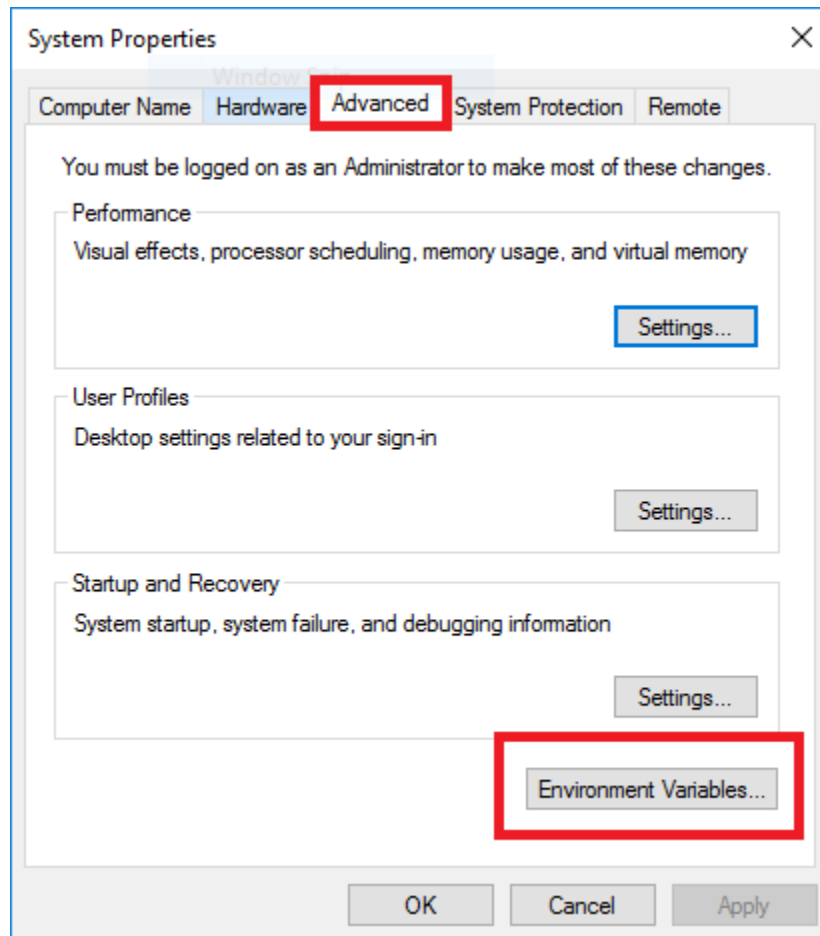
Windows Firewall
Check firewall status | Allow an app through Windows Firewall

Power
Change when the computer sleeps

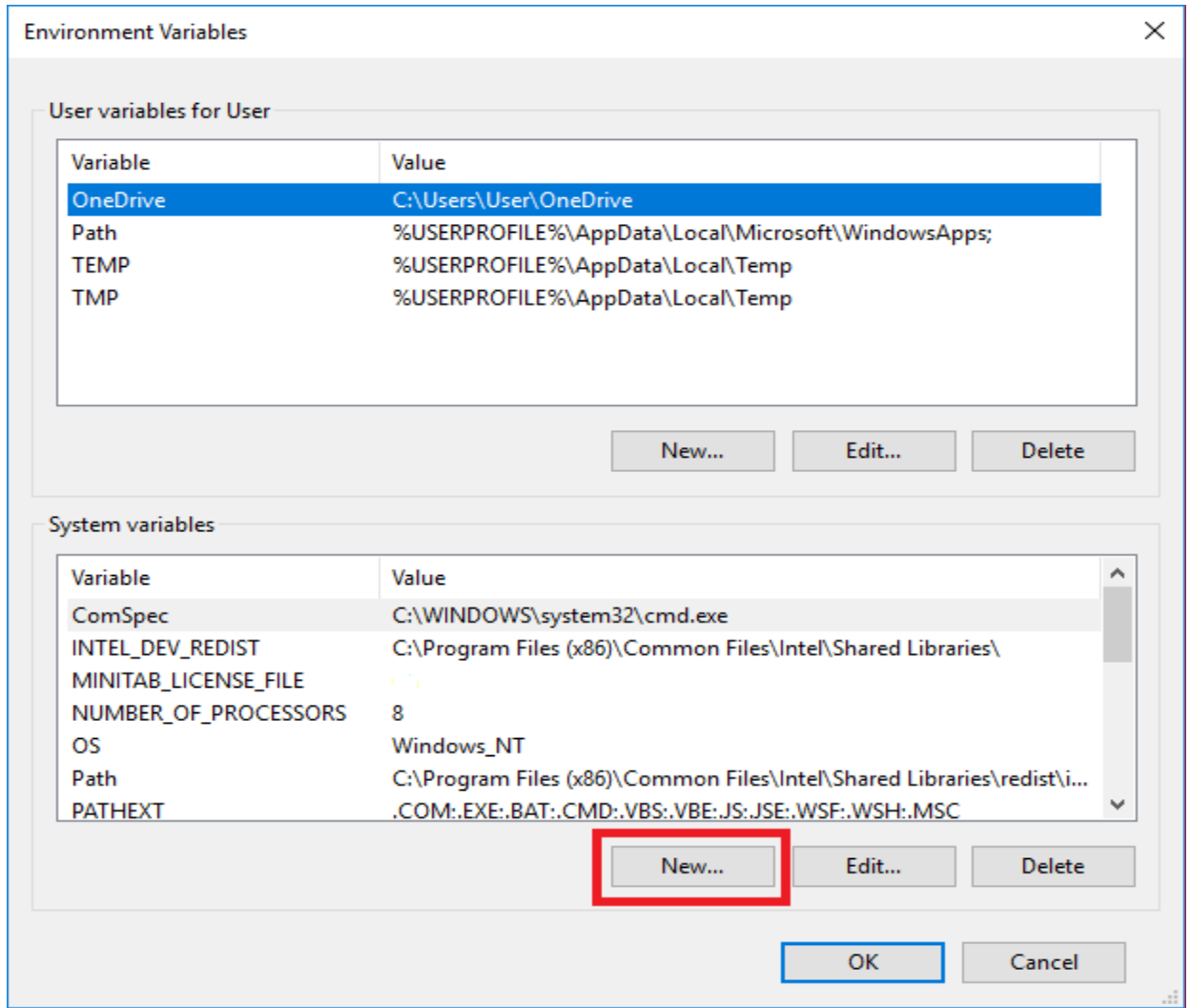
File History
Save backup copies of your files with File History | Restore your files with File History



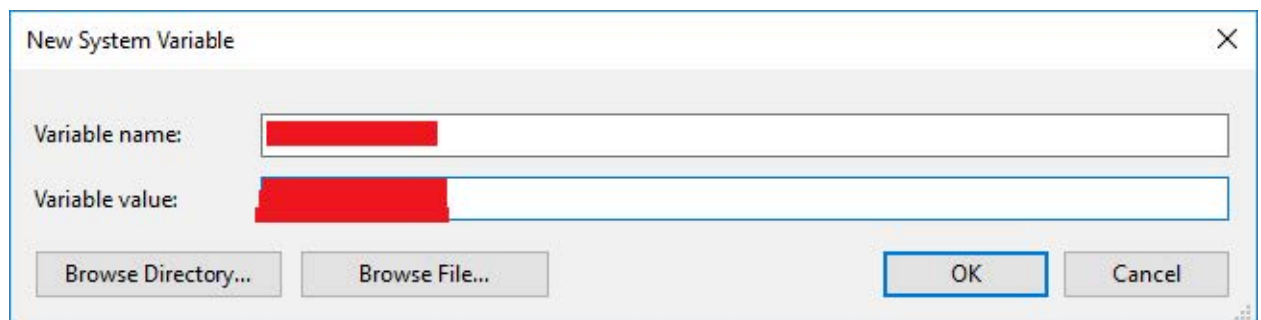
3. A window called **System Properties** will be open, under the **Advanced** section, select the **Environment Variables** button.



- Head down to **System Variables**, and select **New**.



- In the **Variable name**, input the text provided by CATS and for **Variable value**, input the IP address.



For licensing information, please contact CATS.